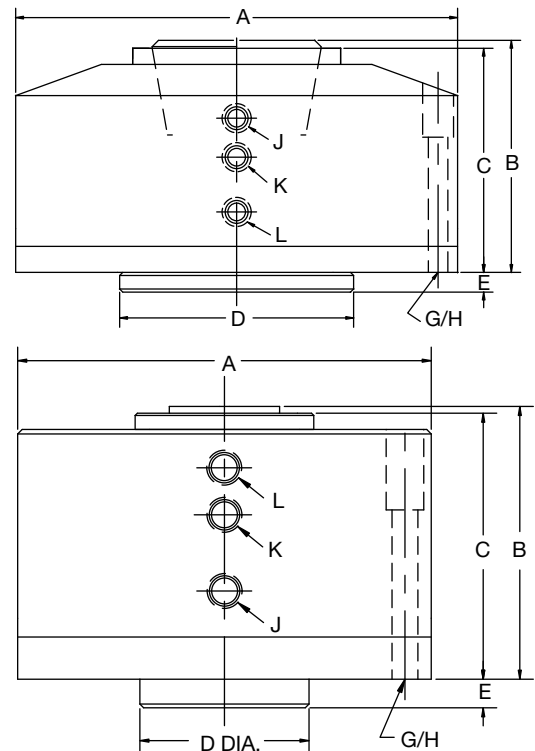


# Air/Hydraulic Stationary Mounted Holding Fixtures

Specifications								
<b>MODEL No.</b>	791-50-0-0	791-100-0-0	791-1100-0-0	791-1180-0-0	791-200-0-0	791-1200-0-0	791-1300-0-0	791-1400-0-0
<b>Basic Design</b>	Fixed Position	Fixed Position	Fixed Position	Fixed Position	Fixed Position	Fixed Position	Fixed Position	Fixed Position
<b>Application</b>	Heavy Duty	Light Duty	Heavy Duty	Heavy Duty	Light Duty	Heavy Duty	Heavy Duty	Heavy Duty
<b>Collet</b>	707-3029 (3-C)	707-178 (5-C)	707-178 (5-C)	707-278 (16-C)	707-315 (22-C)	707-315 (22-C)	791-1310 (35-C)	791-1400 (44-C)
<b>Piston Area</b>	5.00 Sq. In.	3.5 Sq. In.	10.16 Sq. In.	20.53 Sq. In.	6.5 Sq. In.	25.46 Sq. In.	35.34 Sq. In.	48.10 Sq. In.
<b>Operating Pressure</b>	80 to 1500 psi	80 to 1500 psi	80 to 1500 psi	80 to 1500 psi	80 to 1500 psi	80 to 1500 psi	80 to 1500 psi	80 to 1500 psi
<b>Displacement</b>	.78 Cu. In.	.7 Cu. In.	1.5 Cu. In.	3.20 Cu. In.	1.3 Cu. In.	4.0 Cu. In.	8.83 Cu. In.	12.02 Cu. In.
<b>Weight</b>	7.5 lbs.	15 lbs.	20 lbs.	39.5 lbs.	35.0 lbs.	45 lbs.	174 lbs.	200 lbs.
<b>Piston Stroke</b>	.156 Max.	.156 Max.	.156 Max.	.156 Max.	.156 Max.	.156 Max.	.25 Max.	.25 Max.
Dimensions								
<b>A</b>	4.00	4.25	5.50	7.50	6.50	8.50	11.50	12.00
<b>B</b>	3.00	3.50	3.62	4.88	4.62	4.50	6.96	9.50
<b>C</b>	2.86	3.21	3.46	4.50	4.50	4.40	6.46	8.75
<b>D</b>	2.2495 / 2.2490	2.2495 / 2.2490	2.2495 / 2.2490	3.6245 / 3.6240	3.6245 / 3.6240	3.6245 / 3.6240	5.9995 / 5.9990	6.999 / 6.997
<b>E</b>	0.38	0.50	0.38	0.38	0.50	0.38	0.50	0.50
<b>G</b>	0.250	0.312	0.312	0.375	0.375	0.375	0.500	0.500
<b>H</b>	3 Holes - 3.375 B.C.	3 Holes - 3.625 B.C.	4 Holes - 4.800 B.C.	4 Holes - 6.750 B.C.	3 Holes - 5.625 B.C.	4 Holes - 7.750 B.C.	4 Holes - 10.500 B.C.	4 Holes - 10.500 B.C.
<b>J (Unclamp)</b>	1/8 N.P.T.	1/8 N.P.T.	1/8 N.P.T.	1/8 N.P.T.	1/8 N.P.T.	1/8 N.P.T.	1/4 N.P.T.	1/4 N.P.T.
<b>K (Clamp)</b>	1/8 N.P.T.	1/8 N.P.T.	1/8 N.P.T.	1/8 N.P.T.	1/8 N.P.T.	1/8 N.P.T.	1/4 N.P.T.	1/4 N.P.T.
<b>L (Coolant)</b>	1/8 N.P.T.	1/8 N.P.T.	1/8 N.P.T.	1/8 N.P.T.	1/8 N.P.T.	1/8 N.P.T.	1/4 N.P.T.	1/4 N.P.T.

Specifications			
<b>MODEL No.</b>	791-1120-0-0	791-1190-0-0	791-1220-0-0
<b>Basic Design</b>	Draw Type	Draw Type	Draw Type
<b>Application</b>	Heavy Duty	Heavy Duty	Heavy Duty
<b>Collet</b>	707-178 (5-C)	707-278 (16-C)	707-315 (22-C)
<b>Piston Area</b>	10.16 Sq. In.	20.53 Sq. In.	25.46 Sq. In.
<b>Operating Pressure</b>	80 to 1500 psi	80 to 1500 psi	80 to 1500 psi
<b>Displacement</b>	1.5 Cu. In.	3.20 Cu. In.	4.0 Cu. In.
<b>Weight</b>	21 lbs.	41 lbs.	46.5 lbs.
<b>Piston Stroke</b>	.156 Max.	.156 Max.	.156 Max.
Dimensions			
<b>A</b>	5.50	7.50	8.50
<b>B</b>	3.62	4.88	4.50
<b>C</b>	3.32	4.50	4.40
<b>D</b>	2.2495 / 2.2490	3.6245 / 3.6240	3.6245 / 3.6240
<b>E</b>	0.38	0.38	0.38
<b>G</b>	0.312	0.375	0.375
<b>H</b>	4 Holes - 4.800 B.C.	4 Holes - 6.750 B.C.	4 Holes - 7.750 B.C.
<b>J (Unclamp)</b>	1/8 N.P.T.	1/8 N.P.T.	1/8 N.P.T.
<b>K (Clamp)</b>	1/8 N.P.T.	1/8 N.P.T.	1/8 N.P.T.
<b>L (Coolant)</b>	1/8 N.P.T.	1/8 N.P.T.	1/8 N.P.T.



## Features:

- Operation - Horizontally or vertically
- Fixed position or draw collet design
- Coolant feed through the fixture
- Remove collet from the top
- Streamlined construction
- Hardened piston
- Fast positive clamping
- Rigid construction
- Minimum stack height
- Low air consumption
- Thru feed capabilities
- Simple operation
- Clamps within 0.001" of true position
- Depth control via internal stop
- Normal operating pressure  
Air - 80 PSI. Hyd. - 1500 PSI
- Replacement parts are available