




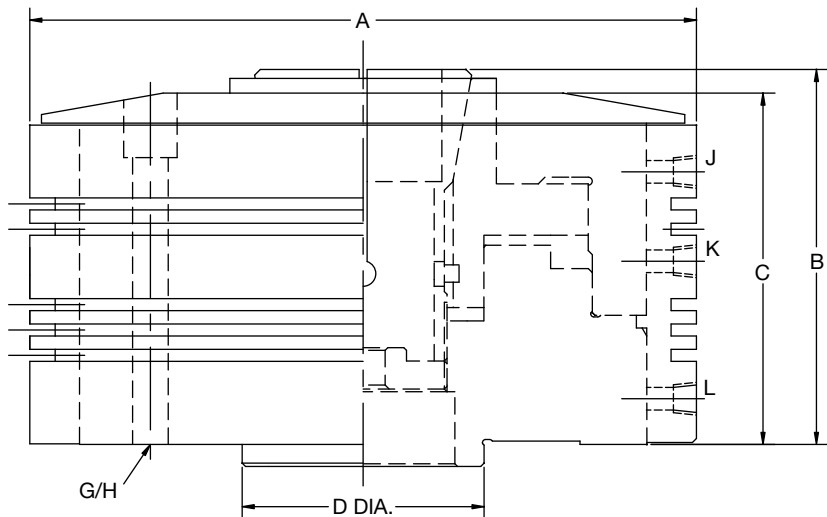


# Air/Hydraulic Rotating Holding Fixtures

Air/Hydraulic Rotating Holding Fixtures					
					
<b>MODEL No.</b>	791-150-0-0	791-1150-0-0	791-250-0-0	791-1250-0-0	791-1450-0-0
<b>Basic Design</b>	Fixed Position	Fixed Position	Fixed Position	Fixed Position	Fixed Position
<b>Application</b>	Light Duty	Heavy Duty	Light Duty	Heavy Duty	Heavy Duty
<b>Collet</b>	707-178 (5-C)	707-178 (5-C)	707-315 (22-C)	707-315 (22-C)	791-1400 (44-C)
<b>Piston Area</b>	3.5 Sq. In.	10.16 Sq. In.	6.5 Sq. In.	25.46 Sq. In.	48.10 Sq. In.
<b>Operating Pressure</b>	80 to 1500 psi	80 to 1500 psi	80 to 1500 psi	80 to 1500 psi	80 to 1500 psi
<b>Displacement</b>	.7 Cu. In.	1.5 Cu. In.	1.3 Cu. In.	4.0 Cu. In.	12.02 Cu. In.
<b>Rotating Torque</b>	15 Ft. Lbs.	18 Ft. Lbs.	20 Ft. Lbs.	27 Ft. Lbs.	50 Ft. Lbs.
<b>Weight</b>	22 lbs.	28 lbs.	18 lbs.	45 lbs.	300 lbs.
<b>Piston Stroke</b>	.156 Max.	.156 Max.	.156 Max.	.156 Max.	.25 Max.
<b>Piston Stroke</b>	0.156	0.156	0.200	0.156	0.156
<b>Max. RPM (with coolant)</b>	950	700	550	400	250
Dimensions					
<b>A</b>	5.62	7.00	8.00	10.00	16.00
<b>B</b>	4.06	4.06	5.50	5.62	9.00
<b>C</b>	3.21	3.46	4.50	4.40	8.00
<b>D</b>	2.2495 / 2.2490	2.2495 / 2.2490	3.6245 / 3.6240	3.6245 / 3.6240	6.999 / 6.997
<b>E</b>	0.50	0.38	0.50	0.38	0.50
<b>G</b>	0.312	0.312	0.375	0.375	0.500
<b>H</b>	3 Holes - 3.625 B.C.	4 Holes - 4.800 B.C.	3 Holes - 5.625 B.C.	4 Holes - 7.750 B.C.	4 Holes - 14.500 B.C.
<b>J (Unclamp)</b>	1/8 N.P.T.	1/8 N.P.T.	1/8 N.P.T.	1/8 N.P.T.	1/4 N.P.T.
<b>K (Clamp)</b>	1/8 N.P.T.	1/8 N.P.T.	1/8 N.P.T.	1/8 N.P.T.	1/4 N.P.T.
<b>L (Coolant)</b>	1/8 N.P.T.	1/8 N.P.T.	1/8 N.P.T.	1/8 N.P.T.	1/4 N.P.T.



### Rotary Fixture:

- Basic piston design
- Center assembly mounted to rotating spindle or table
- Outer housing held stationary (secure but not rigid)
- Many features are the same as stationary mounted models
- Mounts to most adapters or face plates
- Locating boss allows for quick changeover
- Coolant recommended for high R.P.M. or heat applications

